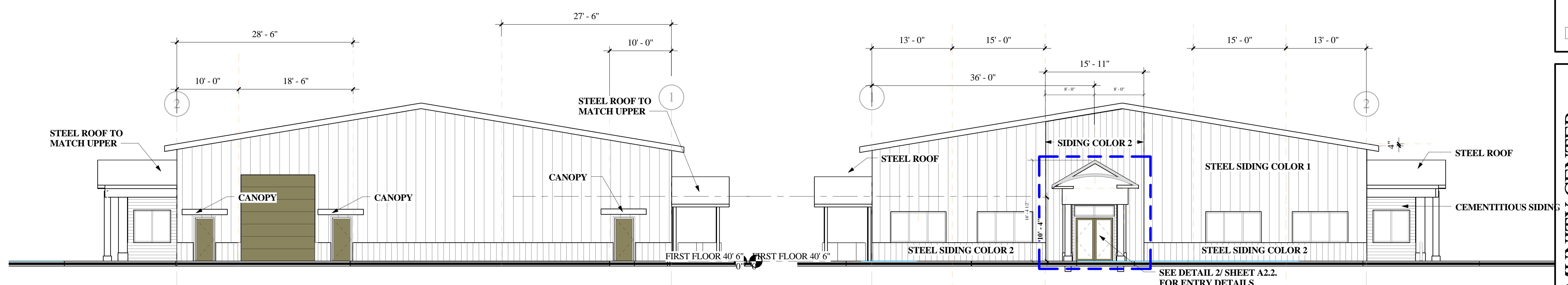
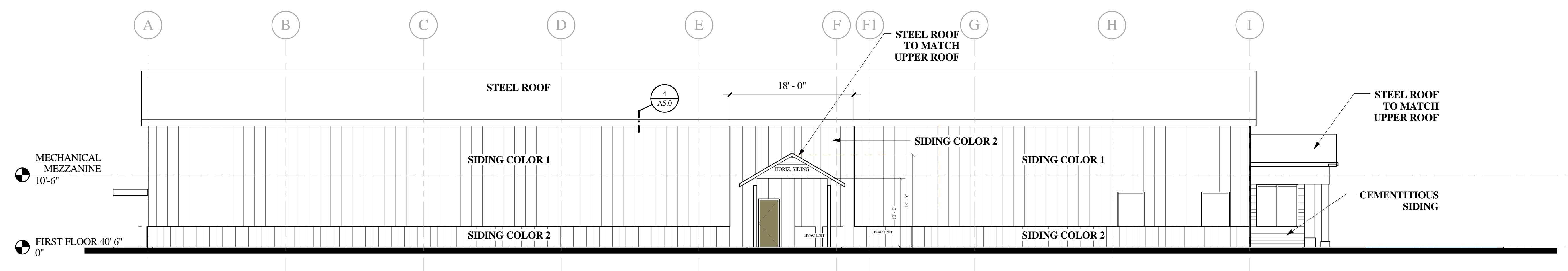


1 EAST ELEVATION
1/8" = 1'-0"



3 NORTH ELEVATION
1/8" = 1'-0"

2 SOUTH ELEVATION
1/8" = 1'-0"



4 WEST ELEVATION
1/8" = 1'-0"

TRW Architecture Planning
515 EAST PARKWAY CT.
Boise, Idaho 83706
208.371.9298
trw@trwarchitecture.com
www.trwarchitecture.com

LICENSED ARCHITECT AR 1710
THOMAS R. WILLIAMS
8-7-2018
STATE OF IDAHO

ADAMS COUNTY COMMUNITY CENTER
107 MICHIGAN STREET
COUNCIL, IDAHO

Project Number	
Date:	10/24/2018 12:02:49 PM
Drawn By:	Author
Checked By:	Checker
Revisions	

A6.0
EXTERIOR ELEVATIONS