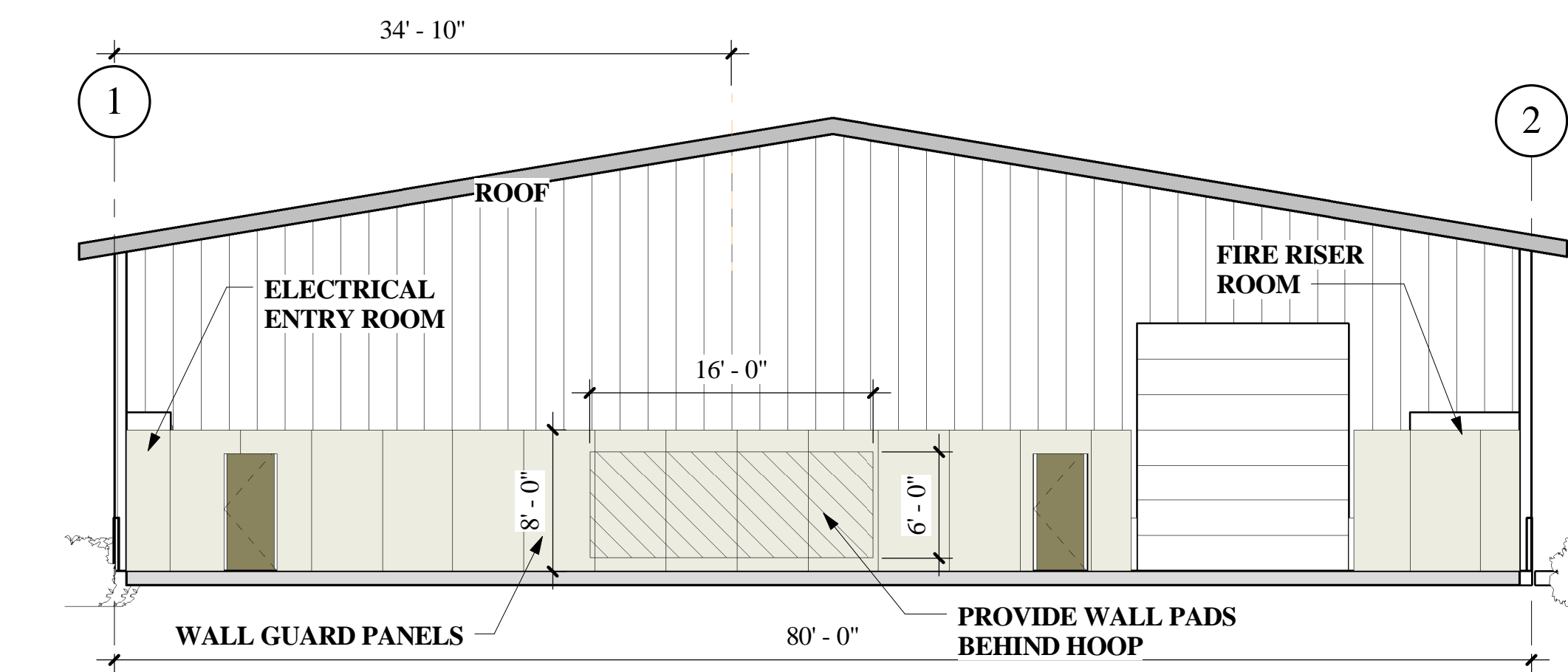
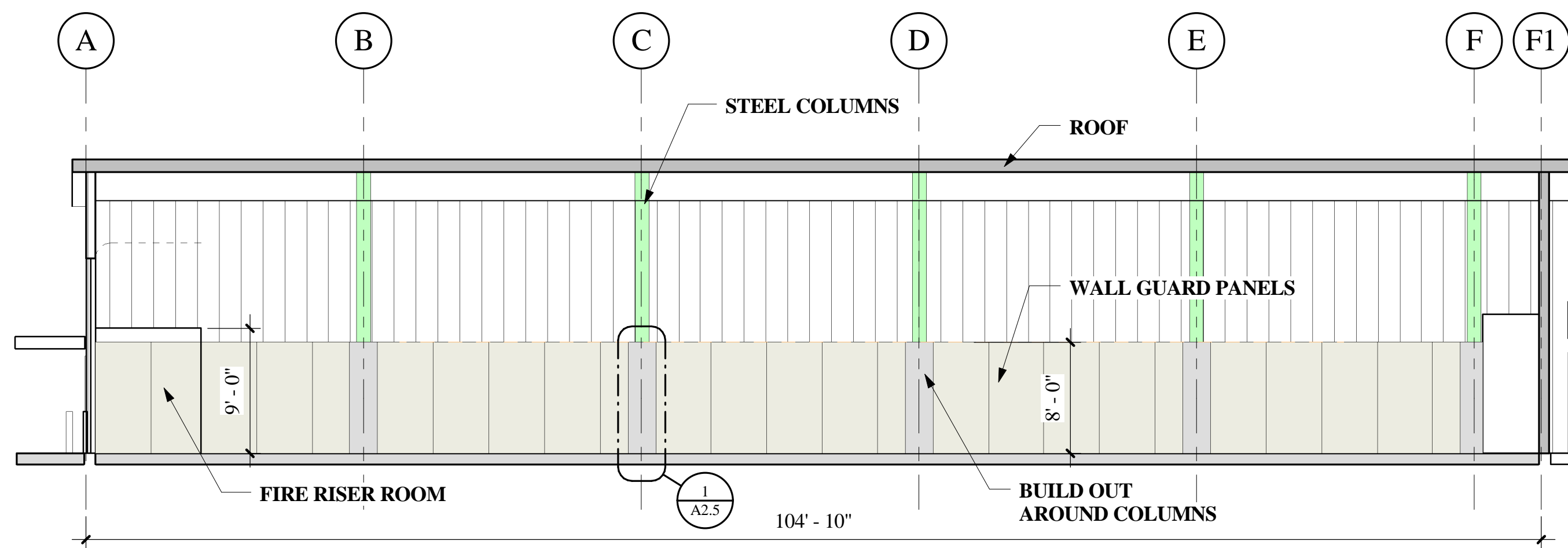


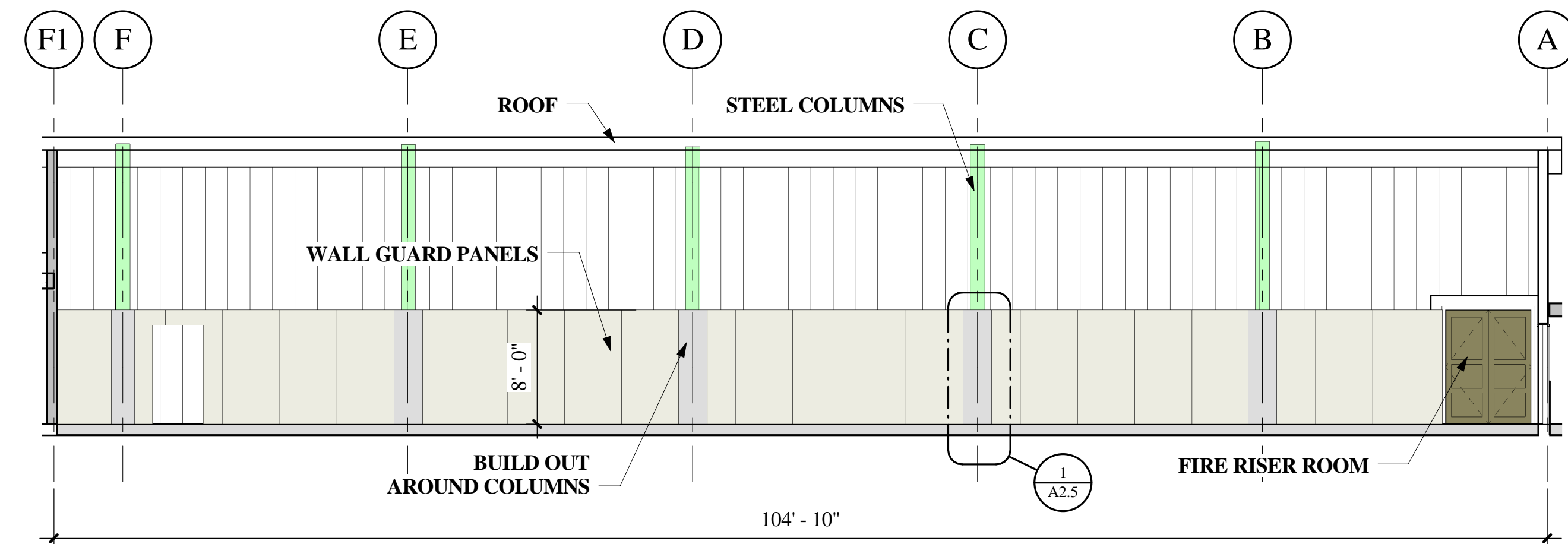
4 SOUTH WALL INTERIOR GYM



2 NORTH WALL INTERIOR GYM



3 EAST WALL INTERIOR GYM



1 WEST WALL INTERIOR GYM

Room Number	Room Name	Room Finish			Ceiling Height	Finish Ceiling	Comments
		Finish Floor	Finish Base	Finish Wall			
100	EXIT	CPT-2	RB	PT	10.25	GYPSUM	
101	EXIT	CPT-2	RB	PT	10.25	GYPSUM	
102	HALLWAY	F-1	RB	PT	9	SUS. GRID	
103	MULTI-ROOM	SEE NOTE	RB	PT	9	SUS. GRID	
104	REC. OFFICE	CPT-1	RB	PT	9	SUS. GRID	
105	KITCHEN	F-3	RB	PT	9	SUS. GRID	SCUBBABLE PANELS
106	STORAGE 1	F-1	RB	PT	9	GYPSUM	
107	STORAGE 2	CPT-1	RB	PT	9	SUS. GRID	
108	LARGE MEETING	CPT-1	RB	PT	9	SUS. GRID	
109	WOMENS	F-2	RB	EPT	9	GYPSUM	
110	W/ SHOWER	F-2	RB	EPT	9	GYPSUM	
111	MENS	F-2	RB	EPT	9	GYPSUM	
112	M/ SHOWER	F-2	RB	EPT	9	GYPSUM	
113	JANITOR	CONCRETE	RB	PT	9	GYPSUM	
114	GYMNASIUM	SEE NOTE	RB	PT	19	OPEN	SEE ADD ALT/SUBTRACT NOTE BELOW
115	FIRE RISER	CONCRETE	RB	PT	9	GYPSUM	1 HR.
116	ELECT. ENTRANCE	CONCRETE	RB	PT	9	GYPSUM	

- F-1 ARMSTRONG IMPERIAL VCT 3 COLORS
- F-2 ARMSTRONG CONNECTION CORLON SHEET VINYL
- F-3 ARMSTRONG PARALLEL 20 KITCHEN "
- CPT-1 CARPET TILE - MOHAWK
- CPT-2 CONNEXUS SUPER NOP 52
- CPT-3 ADD/ALT SIGNATURE - CARPET DECK 2 - GYM
- RB RUBBER BASE
- PT PAINT 2 COAT LATEX FINISH / PRIMER BASE
- EPT EPOXY PAINT

GYM FLOOR- BASE BID:
 ENTIRE GYM FINISHED (APPROX. 8162SF.) WITH JOHNSONSITE SPORTS FLOOR 6.5mm / TARKETT SPORTS " OMNI FLOOR" 6.5mm TO INCLUDE PAINT STRIPS ON FLOOR AS SHOWN.

ADD/SUBTRACT ALT:
 SIGNATURE SPORTS FLOOR SYSTEM(OR EQUAL) HARDWOOD GYM (APPROX. 4200 SF) FLOOR WITH SEALED CONCRETE IN THE REMAINDER. (APPROX. 3962SF) TO INCLUDE PAINT STRIPS ON FLOOR AS SHOWN.

ADD/ALT: CARPET DECK 2. REMOVABLE PROTECTIVE CARPET TO PROTECT AND COVER THE GYMNASIUM FLOOR WHEN IN OTHER USE OTHER THAN ATHLETICS. PROVIDE 2/3 COVERAGE OF THE 4200 SF = 2800 SF. SEE SPECIFICATION 096822 CARPET DECK COVER TILE.

TRW Architecture Planning
 515 EAST PARKWAY CT.
 Boise, Idaho 83706
 208.371.9298
 trw@trwarchitecture.com
 www.trwarchitecture.com

LICENSED ARCHITECT AR 1710
 THOMAS R. WILLIAMS
 8-7-2018
 STATE OF IDAHO

ADAMS COUNTY COMMUNITY CENTER
 107 MICHIGAN STREET
 COUNCIL, IDAHO

Project Number
 Date: 10/24/2018 12:02:10 PM
 Drawn By: Author
 Checked By: Checker

Revisions	
Revision 1	MMD/YYYY Y

A4.1
 ROOM FINISH INTERIOR ELEVATIONS

SHEET REVISED 10/24/2018