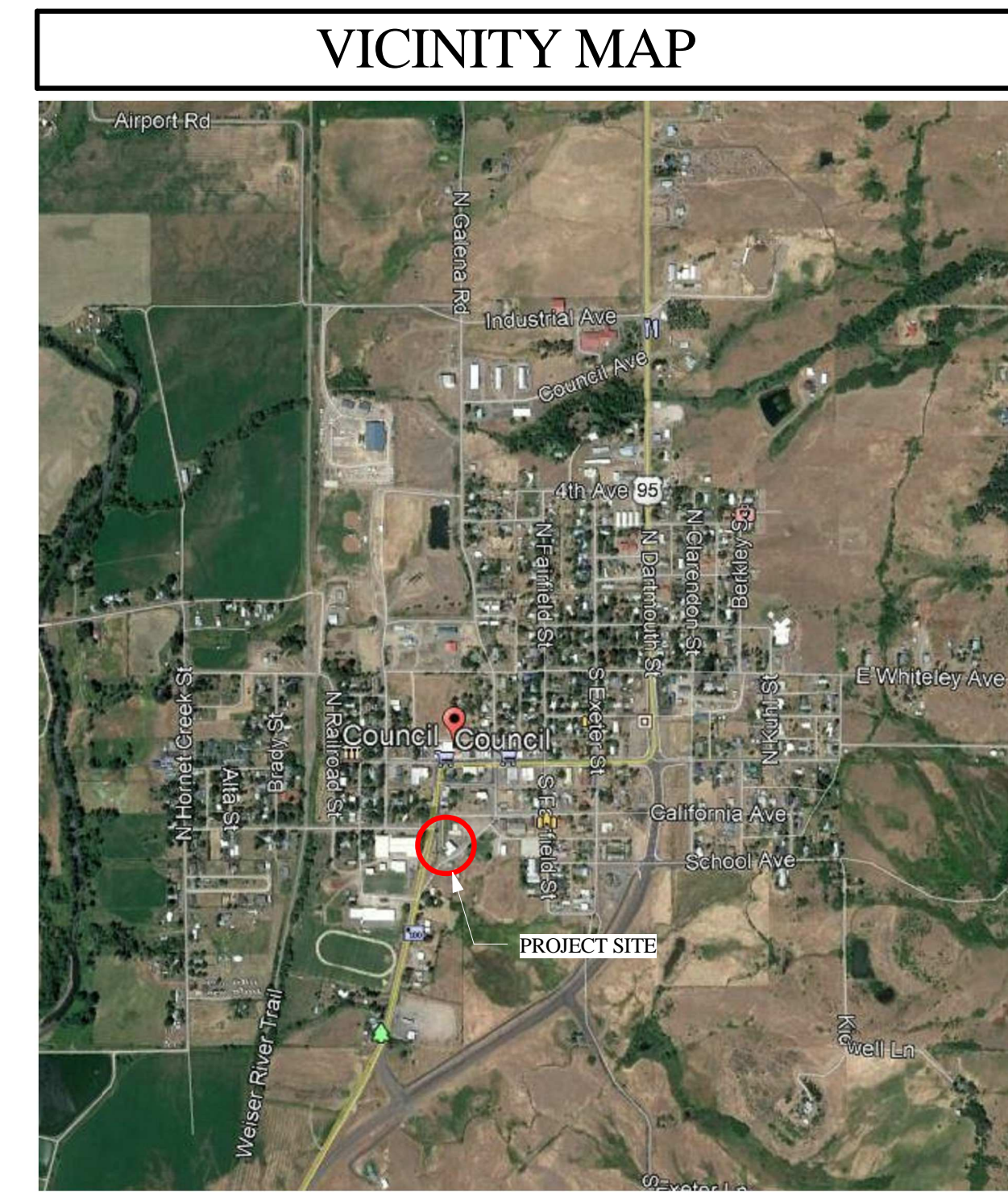
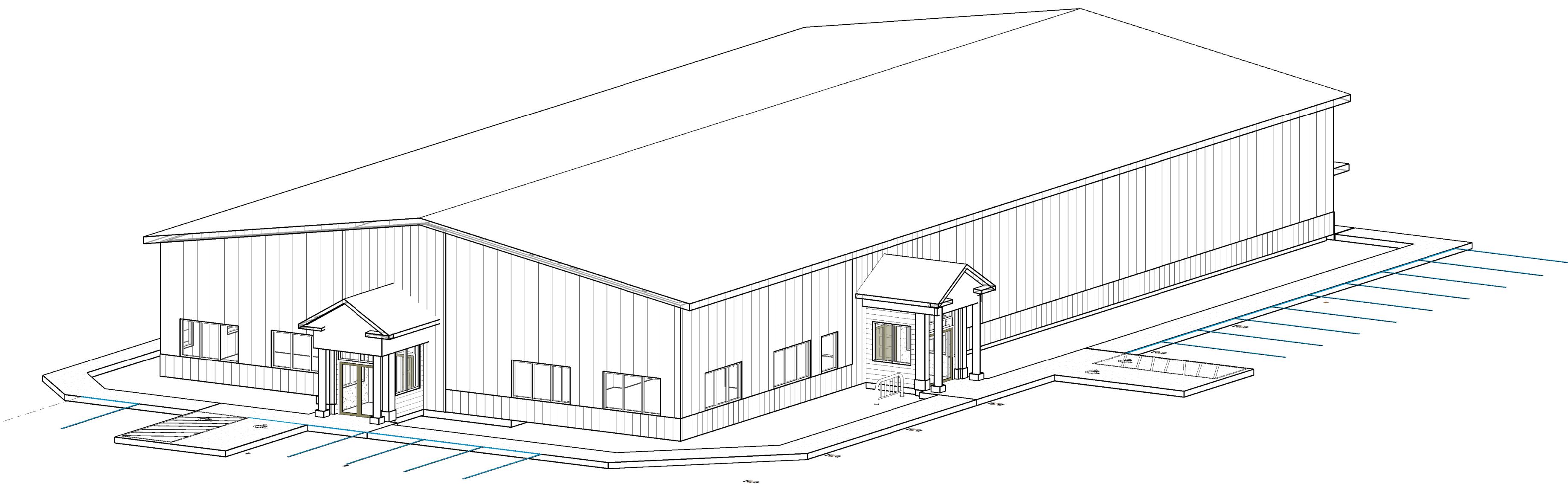


ADAMS COUNTY COMMUNITY CENTER

COUNCIL, IDAHO
107 MICHIGAN STREET



CURRENT PUBLISHED AND RECOGNIZED CODES IN COUNCIL, ADAMS COUNTY

- Code enforced to 2015 IBC requirements:
- Frost depth: 28 inches
- Seismic Zone: D
- Wind exposure – C 85 miles per hour Design loads for Adams County:
- Snow loads – Council, Salmon River, Indian Valley areas: 80 lbs per sq ft (live),
New Meadows area: 100 lbs., Rock Flat, Bear: 120.
(Owner has requested that snow loads be increased in Council to 100lbs psf for this project)
- Wind load – 85 miles per hour Set back required by County:
- 10 ft off property line
- 25 ft off of County road (unless in a subdivision)

PLAN ANALYSIS

Project Location:
107 MICHIGAN STREET

Project Occupancy and Use:
ASSEMBLY / BUSINESS

Total Building Area:
12,800 SF. 8000 ASSEMBLY + 4800 BUSINESS

Construction Type:
III-B

Fire Sprinklers:
FIRE - SPRINKLED

Conditional Use and Design Review:
N/A

Applicable Building Codes:
SEE CODE SHEET A0.2 (2015 I.B.C.)

INDEX OF DRAWINGS

NO.	SHEET NAME
A2.6	DETAILS
Q0.0	BIKE RACK
A0.0	COVER TITLE SHEET
A0.2	IBC 2015 CODE DATA
A0.3	CODE REVIEW SHEET
C1.0	OVERALL & EXISTING SITE PLAN
C2.0	DEMOLITION PLAN
C3.0	GRADING AND DRAINAGE PLAN
C4.0	UTILITIES PLAN
A0.4	COM CHECK IECC
A1.0	SITE
A1.2	SITE DETAILS
A1.3	LANDSCAPE IRRIGATION SHEET
A2.0	FLOOR PLAN OVERALL
A2.1	FLOOR PLAN OFFICES
A2.2	FLOOR PLAN GYM
A2.3	ENLARGED W/C & KITCHEN PLAN
A2.4	PLAN DETAILS
A2.5	MULTIPURPOSE ROOM DETAILS
A3.0	REFLECTED CEILING OFFICES
A4.0	SCHEDULES & INTERIORS
A4.1	ROOM FINISH INTERIOR ELEVATIONS
A5.0	WALL SECTIONS
A5.2	BUILDING SECTION
A5.3	BUILDING SECTION
A5.4	INTERIOR DETAILING
A5.5	INTERIOR DETAILING
A5.6	INTERIOR DETAILING
A5.7	INTERIOR DETAILING
A6.0	EXTERIOR ELEVATIONS
A6.1	EXTERIOR ADD ALT WAINSCOTT
A7.0	ROOF PLAN
S0.0	GENERAL STRUCTURAL NOTES
S0.1	SPECIAL INSPECTIONS
S0.2	TYPICAL STRUCTURAL DETAILS
S1.0	FOUNDATION PLAN
S1.1	FOUNDATION DETAILS
S1.2	FOUNDATION DETAILS
S1.3	CANOPY PLAN
M1.1	HVAC PLAN - OFFICES & MEZZ
M1.2	HVAC PLAN - GYM
M2.1	HVAC DETAILS
M2.2	HVAC SCHEDULES
M2.3	HVAC COM-CHECK REPORT
P1.1	WASTE & VENT PLAN OFFICES & KIT.
P1.2	WASTE & VENT GYM
P2.1	WATER PLAN - OFFICES & MEZZ.
P2.2	WATER PLAN - GYM
P3.0	PLUMBING SCHEDULE & DETAILS
E0.0	ELECTRICAL COVER SHEET & SYMBOLS
E0.1	IECC ENERGY COMPLIANCE
E1.1	ELECTRICAL PLAN - OFFICES & KITCHEN
E1.2	ELECTRICAL PLAN - GYM
E2.1	ELECTRICAL HVAC PLAN - OFFICES
E2.2	ELECTRICAL HVAC PLAN - GYM
E3.1	ELECTRICAL LIGHTING PLAN - OFFICES
E3.2	ELECTRICAL LIGHTING PLAN - GYM
E4.0	ELECTRICAL PANEL SCHEDULE

CONSULTANTS

CONSTRUCTION MANAGER
SCOTT HEDRICK CONSTRUCTION
1154 N. ORCHARD ST.
BOISE, IDAHO 83705
208.345.5800

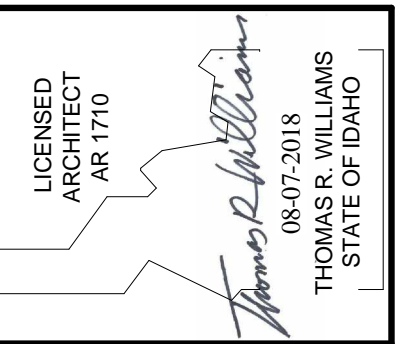
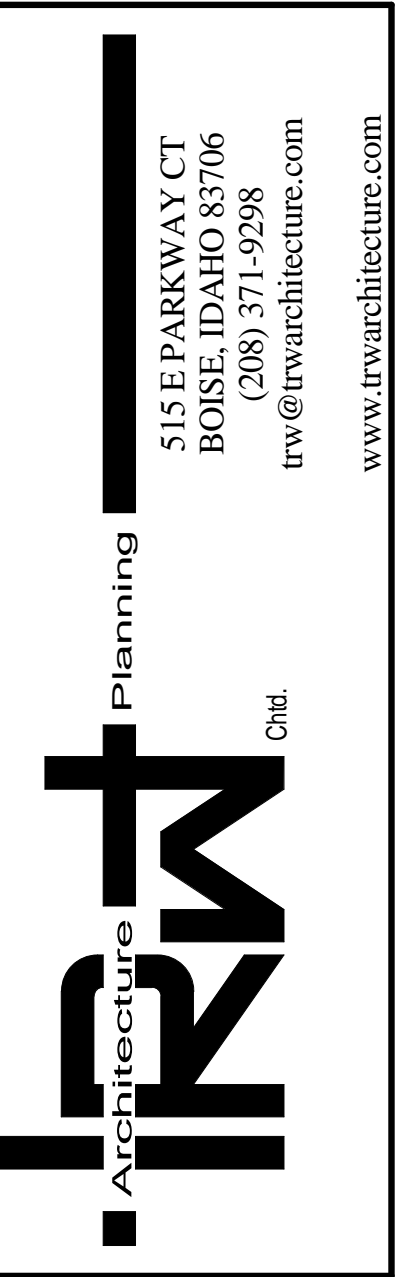
STRUCTURAL ENGINEERING
STRUCTURAL EDGE
5509 N. GLENWOOD
GARDEN CITY, IDAHO 83714
208.501.2289

MECHANICAL PLUMBING ENGINEERING
ECI - ENGINEERING CONSULTANTS
5925 S. FEDERAL WAY
BOISE, IDAHO 83705
208.376.9820

ELECTRICAL ENGINEERING
ECI - ENGINEERING CONSULTANTS
5925 S. FEDERAL WAY
BOISE, IDAHO 83705
208.376.9820

CIVIL ENGINEERING
CK3
368 SW 5TH AVE
ONTARIO, OREGON 97914
541.889.5411

GEO-TECH
MATERIALS TESTING INC. - M.T.I.
368 SW 5TH AVE
BOISE, IDAHO 83709



ADAMS COUNTY COMMUNITY CENTER
COUNCIL, IDAHO
107 MICHIGAN STREET

Project Number

Date: 10/24/2018 12:01:11 PM
Drawn By: Author
Checked By: Checker

Revisions

A0.0
COVER TITLE SHEET

REVISED SET 10/24/2018