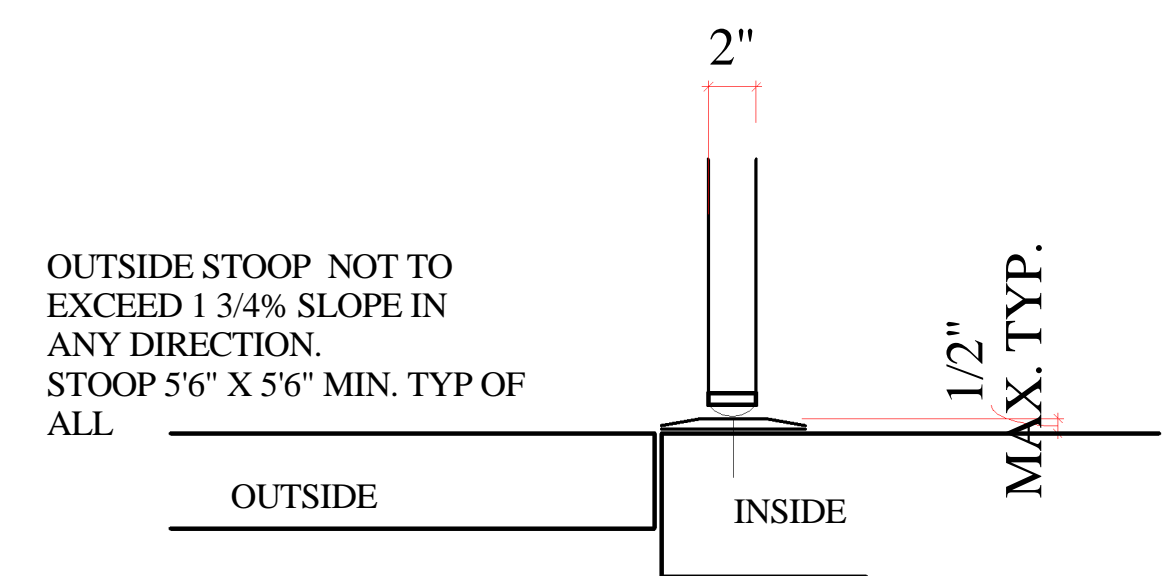
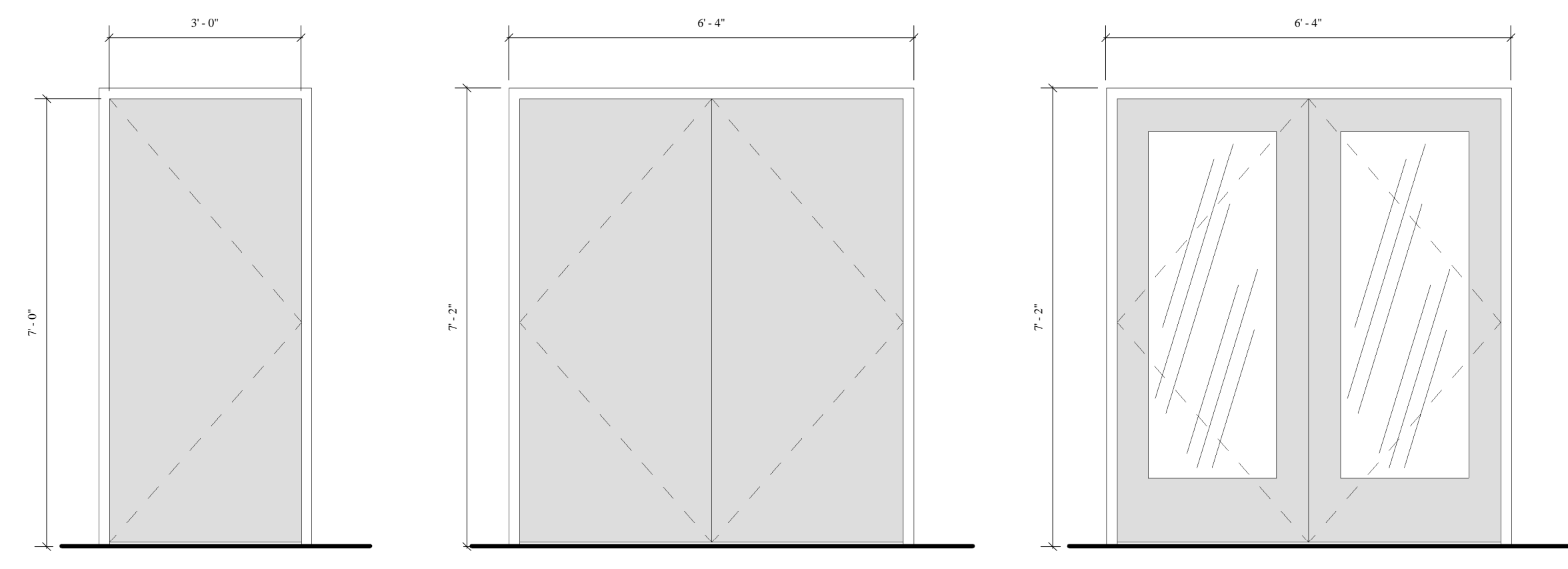


Door						Finish Comments
Door Number	Width	Height	Operation	Frame Material	Fire Rating	
1	3'-0"	7'-0"	Gym Exit	HM	0	Exit Hardware/Steel Door / Type A
2	3'-0"	7'-0"	Gym Exit	HM	0	Exit Hardware/Steel Door / Type A
3	3'-0"	7'-0"	Gym Exit	HM	0	Exit Hardware/Steel Door / Type A
4	6'-0"	7'-0"	Main Entry 1	HM	0	Exit Hardware/Steel Door / Type D
5	6'-0"	7'-0"	Main Entry 2	HM	0	Exit Hardware/Steel Door / Type D
6	3'-0"	7'-0"	Mens W/C Privacy	HM	0	Privacy/Solid Core Wood / Type A
7	3'-0"	7'-0"	Womens W/C Privacy	HM	0	Privacy/Solid Core Wood / Type A
8	3'-0"	7'-0"	W/C Main	HM	0	Push/Pull/Solid Core Wood / Type A
9	3'-0"	7'-0"	W/C Main	HM	0	Push/Pull/Solid Core Wood / Type A
10	3'-0"	7'-0"	Rec Office	HM	0	Office /Solid Core Wood / Type A
11	6'-0"	8'-0"	Large Meeting Rm	HM	0	Exit Hardware / Solid Core Wood / Type B
12	6'-0"	8'-0"	Storage Rm Dbl Tall	HM	0	Store Locking / Solid Core / Wood Type B
13	3'-0"	7'-0"	Kitchen	HM	0	Kitchen / Solid Core Wood / Type B
14	6'-0"	7'-0"	Gym Exit	HM	0	Exit Hardware / Steel Door / Type A
15	6'-0"	8'-0"	Large Meeting Rm	HM	0	Exit Hardware / Solid Core Wood / Type B
16	3'-0"	7'-0"	Janitor	HM	0	Store Locking / Solid Core Wood / Type B
17	6'-0"	8'-0"	Large Meeting Rm	HM	0	Exit Hardware / Solid Core Wood / Type B
18	6'-0"	4'-0"	Overhead Roll Door	Per Mfg.	0	Overhead Roll Door Dead Bolt
20	6'-0"	8'-0"	Storage Rm Dbl Tall	HM	0	Store Locking / Solid Core / Wood / Type B
21	6'-0"	7'-0"	Main Entry 1	HM	0	Exit Hardware / Steel Door / Type B
22	6'-0"	7'-0"	Main Entry 2	HM	0	Exit Hardware / Steel Door / Type B
23	3'-0"	7'-0"	Womens Shower	HM	0	Privacy / Steel Type A
24	3'-0"	7'-0"	Mens Shower	HM	0	Privacy / Steel Type A
25	3'-0"	7'-0"	Kitchen	HM	0	Kitchen / Solid Core Wood Type B
26	6'-0"	8'-0"	Electrical Closet	HM	0	Keyed Locking Steel / Type B
27	3'-0"	7'-0"	Fire Riser Closet	HM	0	Keyed Locking / Steel Type A Exterior
28	6'-0"	7'-0"	Gym Janitor Closet	HM	0	Janitor Closet / Steel / Type B
29	12'-0"	14'-0"	Gym Over Head Door	By Mfg.	0	Overhead Roll Door
30	3'-0"	7'-0"	Mezz Access Door	HM	0	Mezz Access Door /Steel / Type A

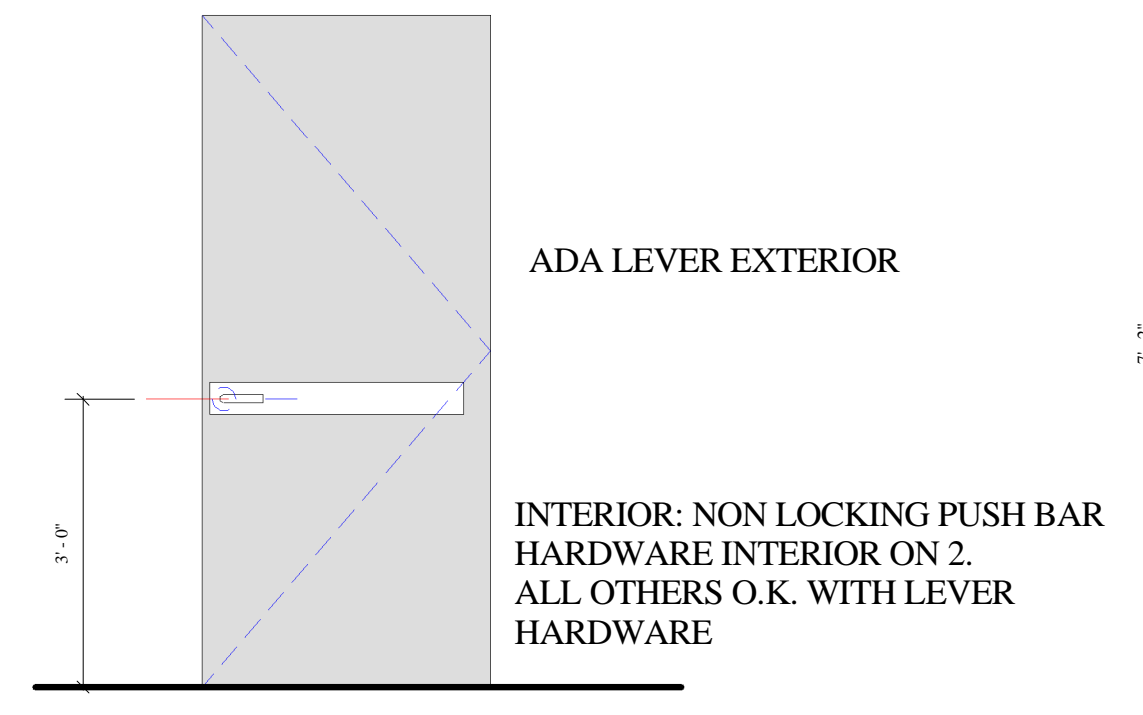
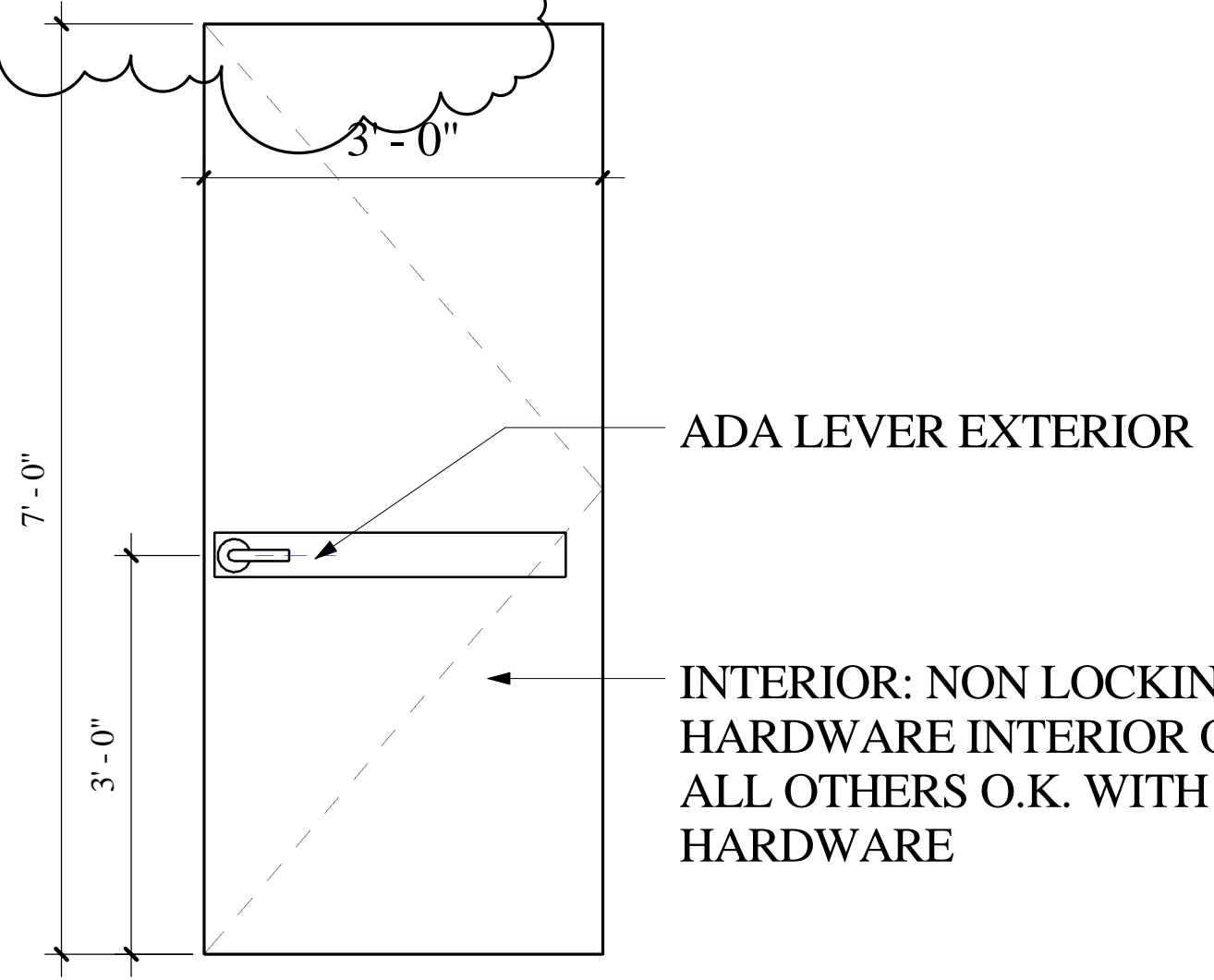
SOLID CORE WOOD DOOR FINISH TO BE SELECTED FROM MANUFACTURE STANDARD COLORS
 STEEL DOORS ARE TO BE PAINTED
 ALL HOLLOW METAL FRAMES ARE TO BE PAINTED



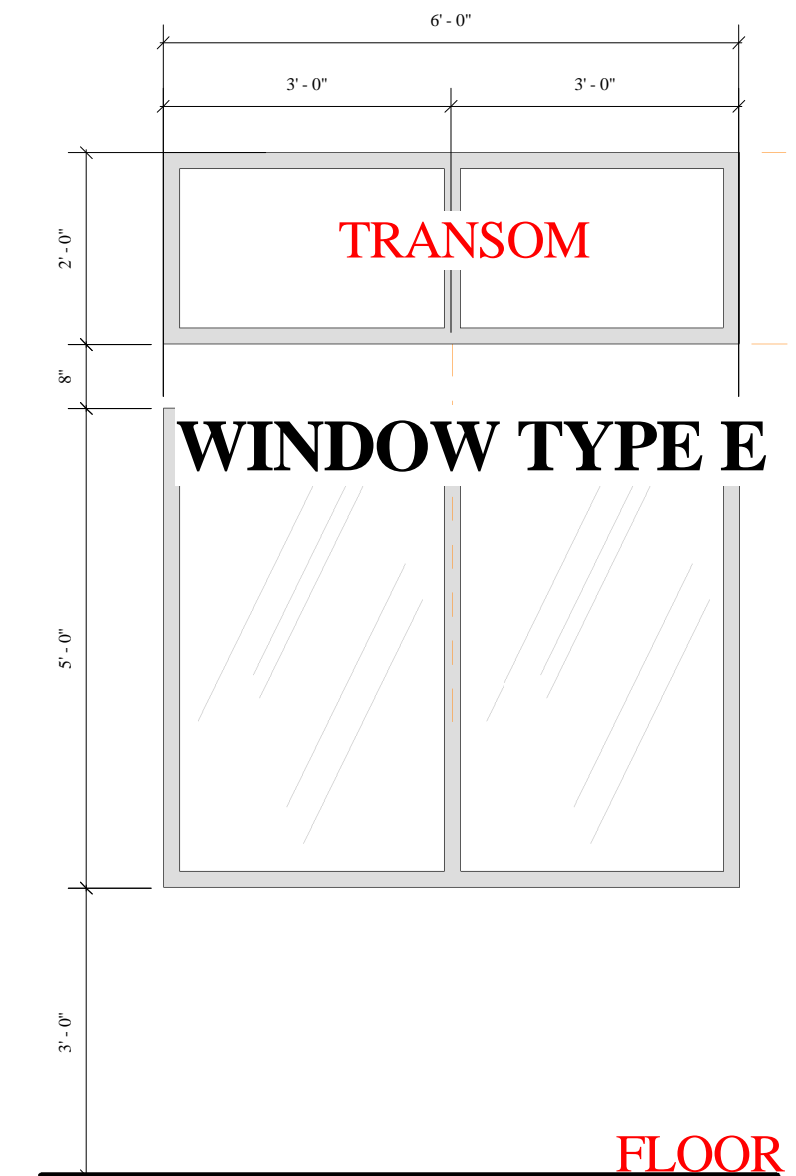
1 DOOR THRESHOLD
 1 1/2" = 1'-0"



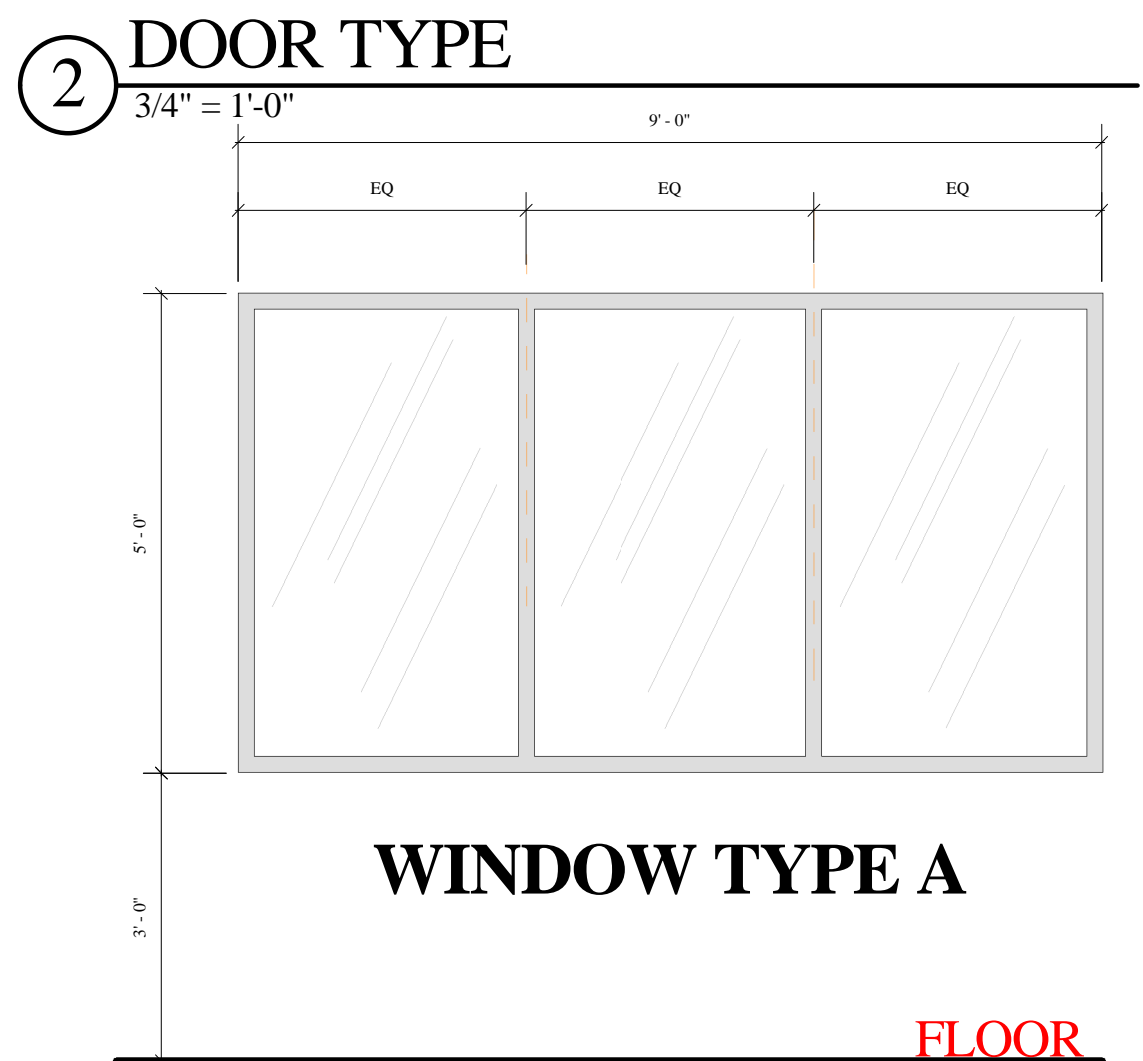
DOOR TYPE A DOOR TYPE B DOOR TYPE C



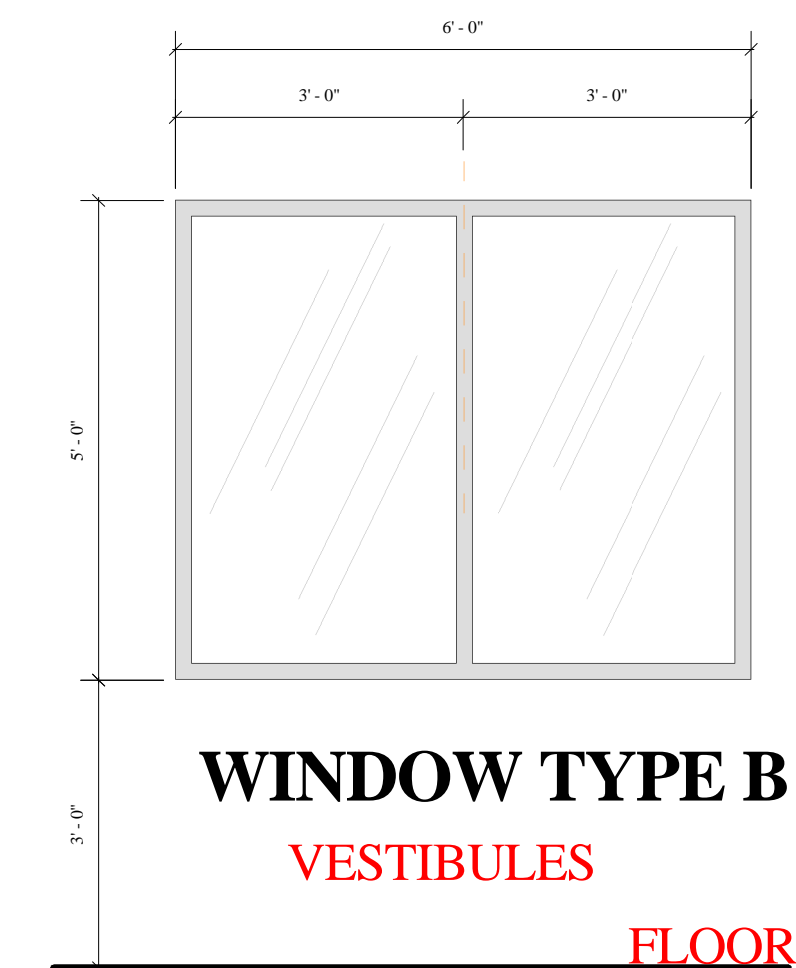
4 DOOR PROFILES
 1/2" = 1'-0"



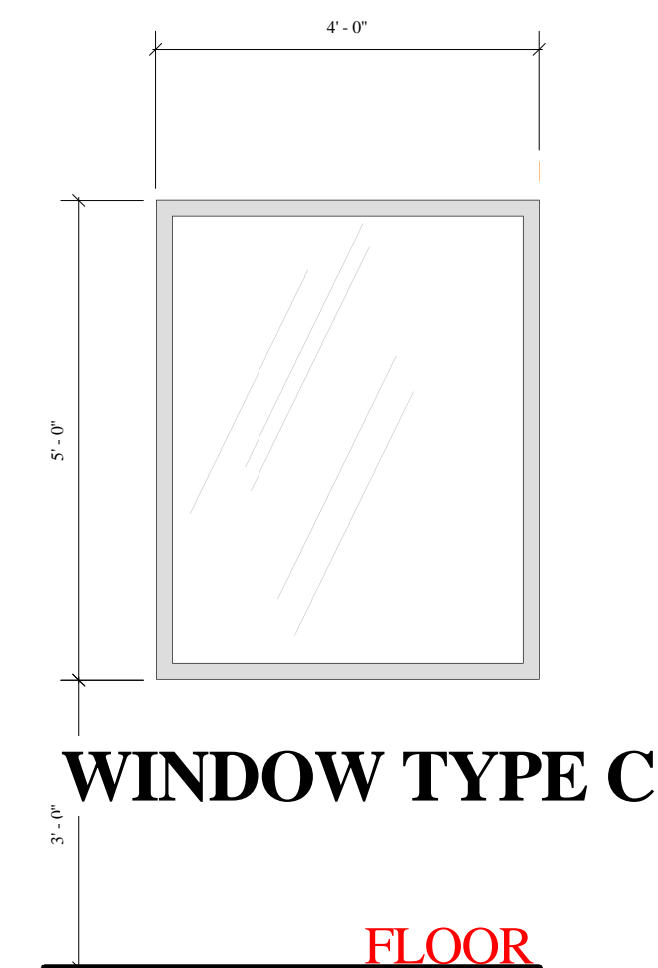
5 WINDOW PROFILES TRANSOM
 1/2" = 1'-0"



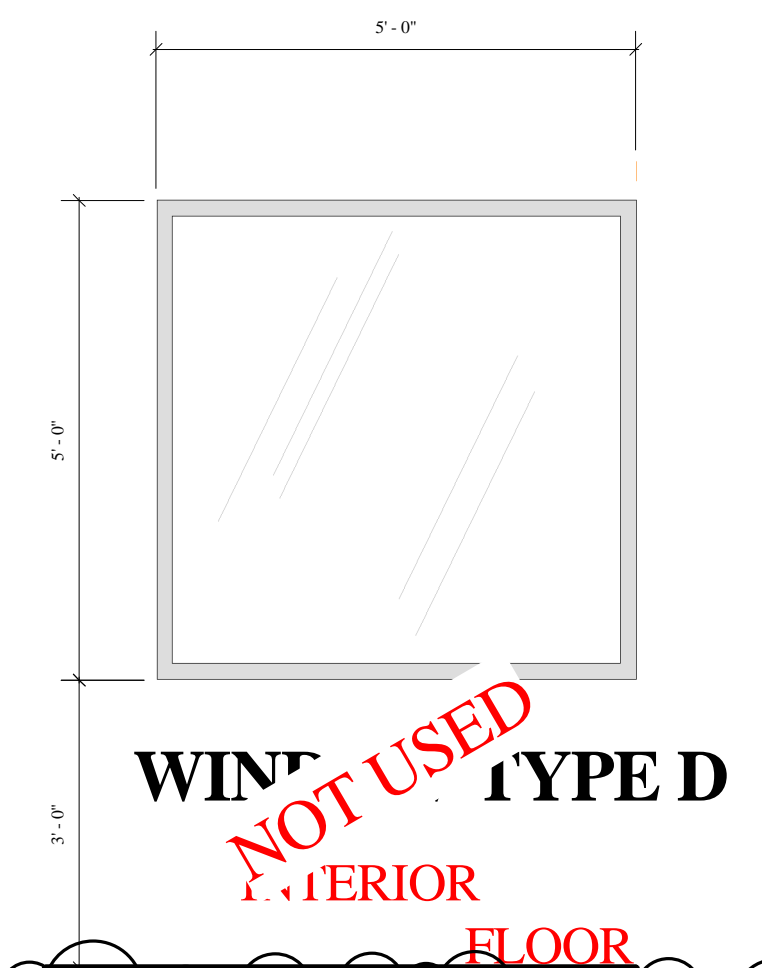
3 WINDOW PROFILES
 1/2" = 1'-0"



WINDOW TYPE B VESTIBULES



WINDOW TYPE C



WINDOW TYPE D

NOT USED INTERIOR FLOOR SHEET REVISED 10/24/2018

TRW Architecture Planning
 515 EAST PARKWAY CT.
 Boise, Idaho 83706
 208.371.9298
 trw@trwarchitecture.com
 www.trwarchitecture.com

LICENSED ARCHITECT AR 1710
 THOMAS R. WILLIAMS
 8-7-2018
 STATE OF IDAHO

ADAMS COUNTY COMMUNITY CENTER
 107 MICHIGAN STREET
 COUNCIL, IDAHO

Project Number
 Date: 10/24/2018 12:02:06 PM
 Drawn By: Author
 Checked By: Checker

Revisions	
Revision 1	MMD/YYYY Y

A4.0
 SCHEDULES & INTERIORS