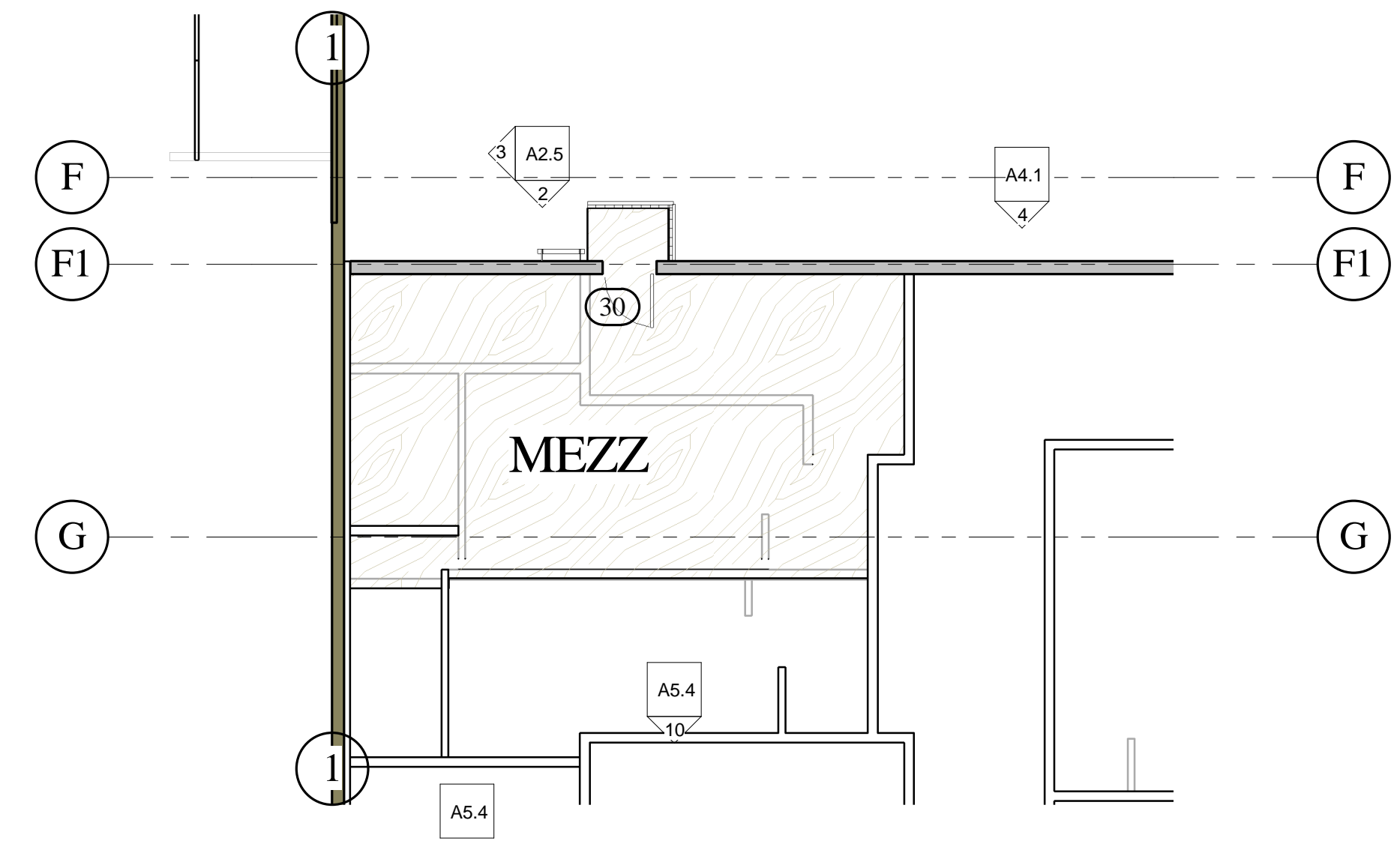
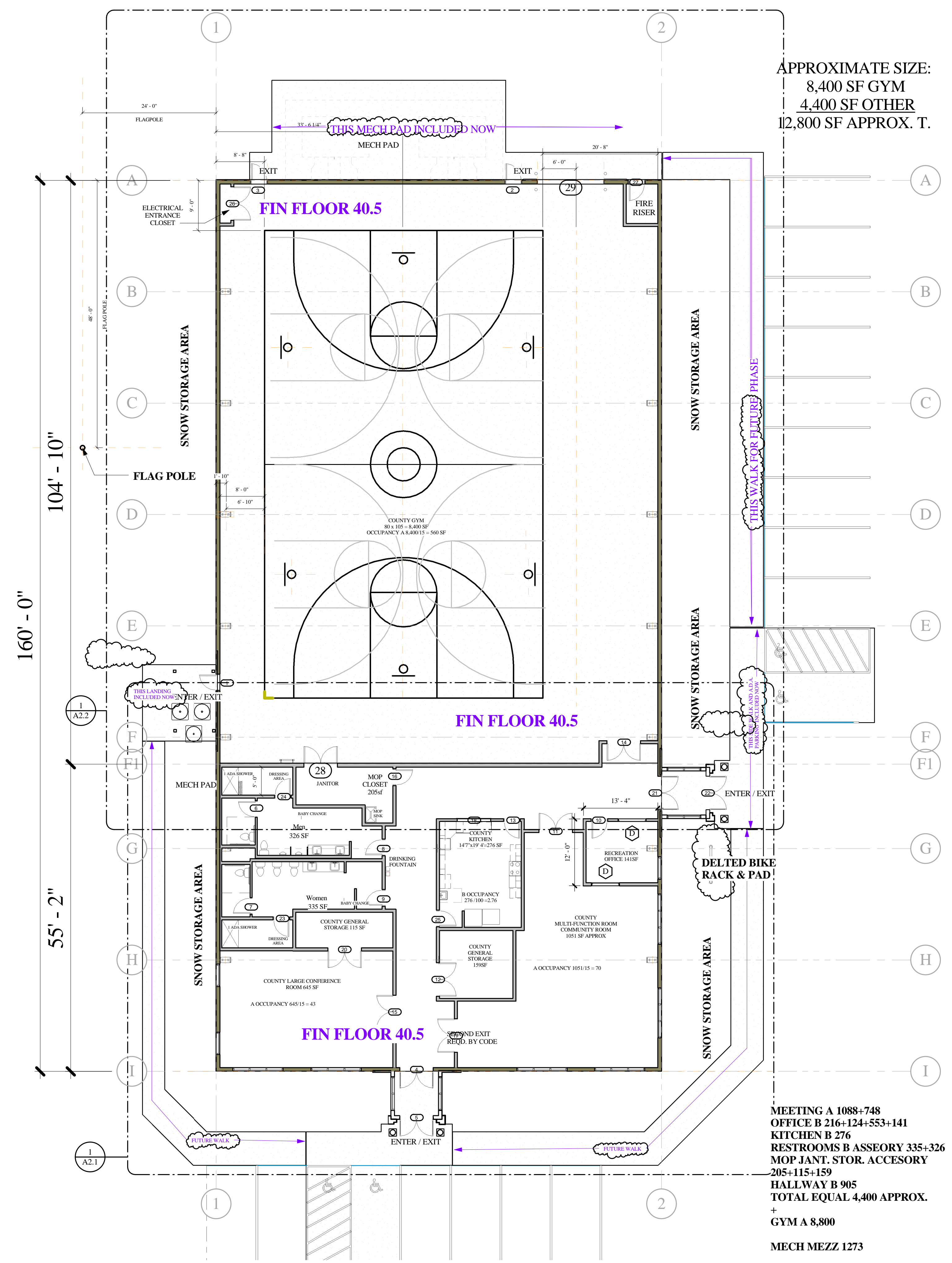


2 SCHEMATIC SECTION
1/8" = 1'-0"



3 MECHANICAL MEZZANINE
1/8" = 1'-0"



APPROXIMATE SIZE:
8,400 SF GYM
4,400 SF OTHER
12,800 SF APPROX. T.

1 FLOOR PLAN OVERALL
3/32" = 1'-0"

MEETING A 1088+748
OFFICE B 216+124+553+141
KITCHEN B 276
RESTROOMS B ASSEORY 335+326
MOP JANT. STOR. ACCESSORY
205+115+159
HALLWAY B 905
TOTAL EQUAL 4,400 APPROX.
+ GYM A 8,800
MECH MEZZ 1273

SHEET REVISED 10/24/2018

Planning
TRW
Architecture
CHTD.

515 EAST PARKWAY CT.
Boise, Idaho 83706
208.371.9298
trw@trwarchitecture.com
www.trwarchitecture.com

LICENSED ARCHITECT AR 1710
THOMAS R. WILLIAMS
STATE OF IDAHO
9-7-2018

ADAMS COUNTY COMMUNITY CENTER
107 MICHIGAN STREET
COUNCIL, IDAHO

Project Number

Date: 10/24/2018 12:01:41 PM

Drawn By: Author

Checked By: Checker

Revisions	
Revision 1	MMD/YYYY Y

A2.0
FLOOR PLAN OVERALL

This set of documents, the ideas, designs, and drawings, are the exclusive property of TRW ARCHITECTURE CHTD. and they are not to be used, in whole, or in part, for any project without the written authorization of TRW ARCHITECTURE CHTD.